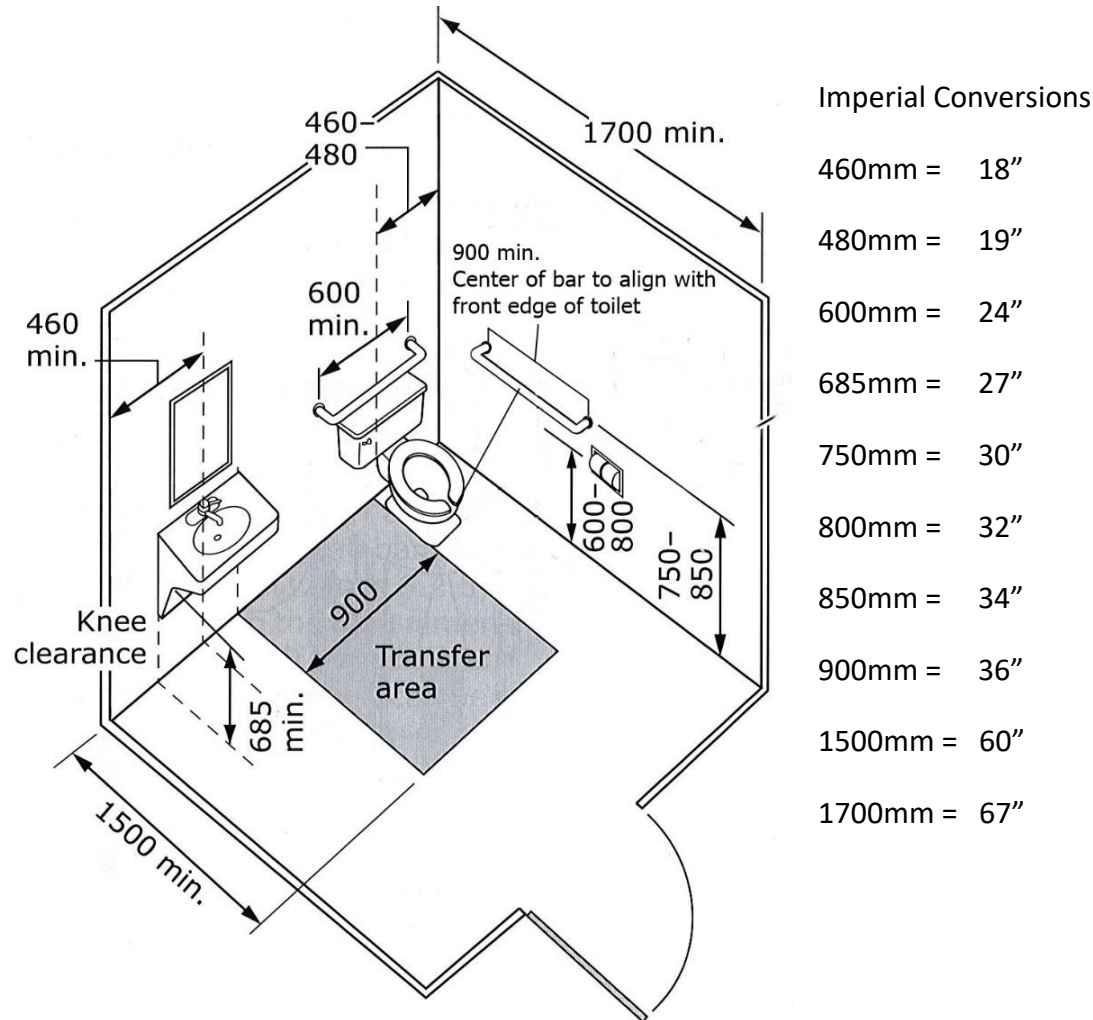


Universal Washroom Guidelines



Additional Requirements

- Door to have a lever-type handle mounted 900-1000mm (36"-40") from floor
- Outward swinging door to be self-closing
- Floor to have a clear turning area no less than 1500mm (60") in diameter
- Sink rim height to be no higher than 865mm (34")
- Sink drain/trap to be off-set or insulated
- Bottom of mirror to be set no higher than 1000mm (40") from floor or be inclined
- Soap Dispenser mounted no higher than 1200mm (48") from floor
- Water Closet (toilet) seat height to be 400 and 460mm (16"-18") from floor
- Coat hook projecting no more than 50mm (2") and mounted 1200mm (48") from floor